



PCM

£2,700 PCM

Brick Lane

London, E1 6SA

Located in the heart of Shoreditch spread over 66.3 square meters is this modern 2 double bedroom apartment set on Brick Lane.

The property has been designed to a high standard and features a bright open plan reception room with hard wood flooring and exposed brickwork. There are 2 good size double bedrooms and a contemporary bathroom.

There is an array of restaurants, bars, coffee shops and shops of Brick Lane literally on your doorstep with Columbia Road Flower Market, The Boxpark and Spitalfields Market all close by.

Transport links include Shoreditch High Street and Liverpool Street Stations with Old Street and Aldgate East also close by.

Photos, tours and plans are of the show flat, furniture and aspect may differ slightly.

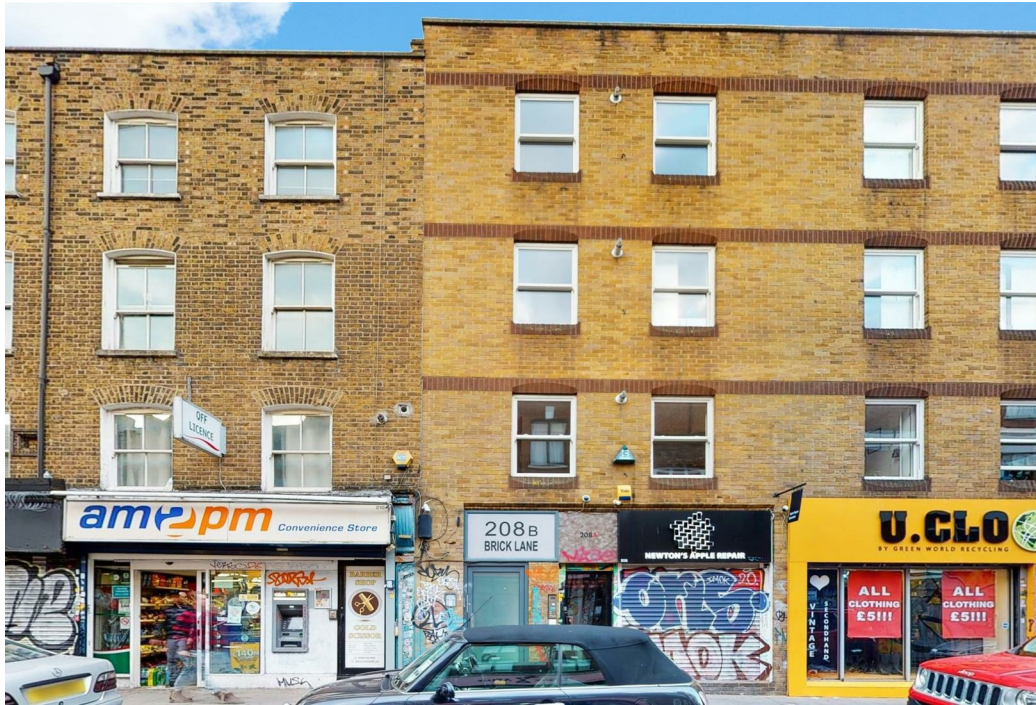
Available middle of October.

5 weeks deposit: £3115

12 month contract: break clause subject to offer

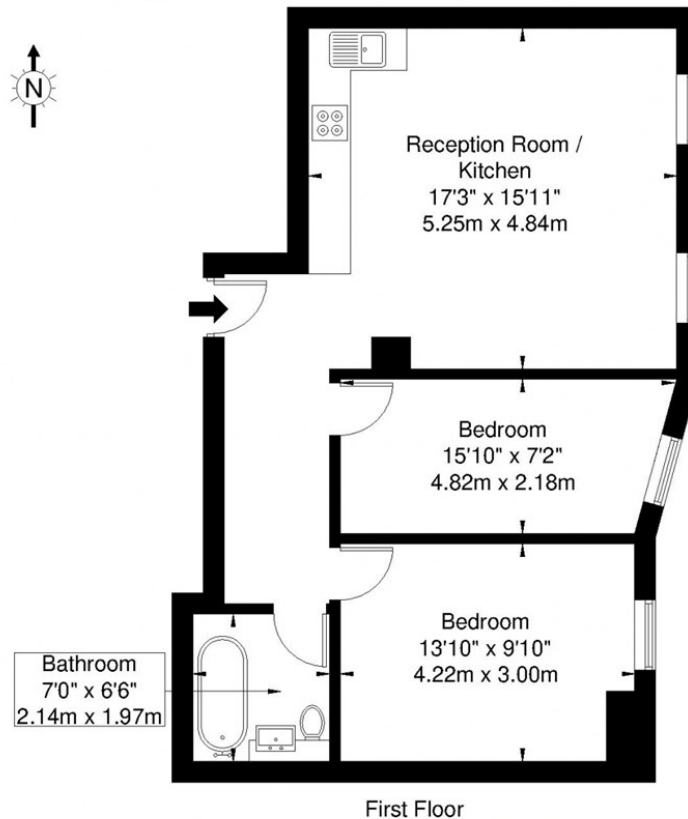
Council Tax: Band B





Brick Lane, E1 6SA

Approx. Gross Internal Area = 61.5 sq m / 662 sq ft



Ref

Copyright

**BLEU
PLAN**

Disclaimer : Floor plan measurements are approximate and are for illustrative purposes only. While we do not doubt the floor plan accuracy and completeness, you or your advisors should conduct a careful, independent investigation of the property in respect of monetary valuation

Energy Efficiency Rating		
	Current	Potential
Very energy efficient - lower running costs		
(92 plus) A		
(81-91) B		
(69-80) C	80	84
(55-68) D		
(39-54) E		
(21-38) F		
(1-20) G		
Not energy efficient - higher running costs		
England & Wales	EU Directive 2002/91/EC	

Agents Note: Whilst every care has been taken to prepare these particulars, they are for guidance purposes only. All measurements are approximate and are for general guidance purposes only and whilst every care has been taken to ensure their accuracy, they should not be relied upon and potential buyers/tenants are advised to recheck the measurements

OFFICE ADDRESS

88 Cheshire Street
London
E2 6EH

OFFICE DETAILS

0207 739 6969
info@peachproperties.com
www.peachproperties.com